



Corporate Office:
220, 2nd Floor, Vardaan Sunrise Plaza, Plot No. 1, LSC Vasantpura Enclave, Delhi - 110096
Site Office: GH - 09A, Tech Zone - 4, Greater Noida (West)
For details, contact: 9650109060, 9650109061, 9650109062
E-mail: info@newtechgroup.co | Web: www.newtechgroup.co | SMS "newtech @ 56161"

Member of
CREDAI



An attention-grabbing
announcement





Pure luxury that enthralls you

Greater Noida's (West) real estate turns into a palatial one

If emerging victorious is your attitude, if being rich and famous is your passion, if befriending nature is your interest, if living luxury is your habit, you are home.

The ultimate lifestyle for the bold and beautiful is round-the-corner. On the notable land of Greater Noida, an imposing kingdom is conceived, where you will live like a king in your palatial residence.





See it for yourself

Leave the polluted world behind and discover unspoiled bliss at La Palacia, where sensational architecture is flawlessly blended with a spectacular natural backdrop. Every apartment is an epitome of brilliance, reserved for the distinguished few.

- 2 & 3 BHK palatial homes
- Located at GH-09A, Tech Zone-4
- Greater Noida (West)
- Placed within nature's splendor
- Perfect escape for luxury seekers
- A masterpiece by an ambitious team
- Adorable, pleasant atmosphere

Living here is an absolute joy

Set your feet at Greater Noida's one of the most prestigious areas. Strategic, unbeatable and opulent, it offers more than the best you have dreamed of for so many years. A wealth of leisure facilities, malls, multiplexes, institutes and hospitals are just some of the attractions within comfortable reach of La Palacia.

- Set at an enviable location
- Well-linked to the outside world
- Prominent destinations close-by
- Rapid infrastructural development



Location Map
(Not to scale)



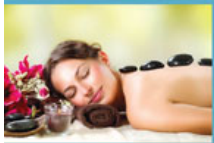
Enhance your sensual side

La Palacia offers residents the best of both worlds, combining tastefully-designed, spacious and vibrant exteriors in lush garden settings with sophisticated and ultra-modern interiors.

The majestic interiors exhibit a perfect marriage of refined modern architecture with innovative specifications. The moment you step into your awe-inspiring home, you sense openness to nature beautifully wrapped with total privacy. So, luxuriate in the pool of unworlded comfort.



- Exquisite interiors exuding style & uniqueness
- Best in design, finishes & specifications
- Ultimate in comfort & privacy
- Artistic yet entirely qualitative
- Especially tailored to royal tastes

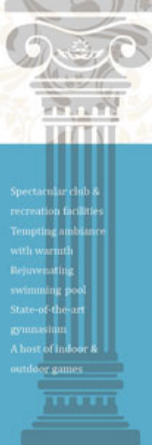


Live relaxed from inside out

Whether you seek an adrenaline rush, total relaxation or a healing touch, La Palacia has it all. You can release the stress at spa, work out in gym, build a scrapbook of memories or simply relax poolside. World-class amenities stitched from across the globe are brought together in this modern clubhouse to keep you and your loved ones fit, cheerful and entertained morning to night.



- Spectacular clubs & recreation facilities
- Tempting ambience with warmth
- Rejuvenating swimming pool
- State-of-the-art gymnasium
- A host of indoor & outdoor games



Greet nature with open arms

Nestled within unspoiled surroundings, this impressive estate boasts breathtaking views of extensive greenery. Pure tranquility, fresh breeze, clear blue skies and gracious water-bodies will mesmerize your senses. An assortment of stunning flowers and landscapes are as diverse and attractive as the apartments themselves. Wider pathways wind their way under canopies of refreshing trees. Come, embrace a revitalizing lifestyle.



- Truly exceptional natural surroundings
- Lush blooming plants & trees
- Exclusive yoga & meditation pavilion
- Gorgeous kids play ground
- Delightful landscapes & fountain



Legends

Hard landscape

-  Internal driveway
Finished in interlocking pavers
-  Drop-off access paving
Finished in granite stone
-  2.8 m wide jogging track in
4.0 m wide fire tender route
-  Stepping stone
-  Synthetic surface for
hilly play area
-  External grade deck
Wood for pool deck
-  Water feature finished in glass
Ceramic tiles in blue colour
-  Seats in natural stones
-  Sculpture
-  Entry/ Exit points

Soft landscape:

-  Description
Planting bed/ plaster
-  Lawn
-  Ornamental foliage/ flowering trees
-  Ornamental palm trees



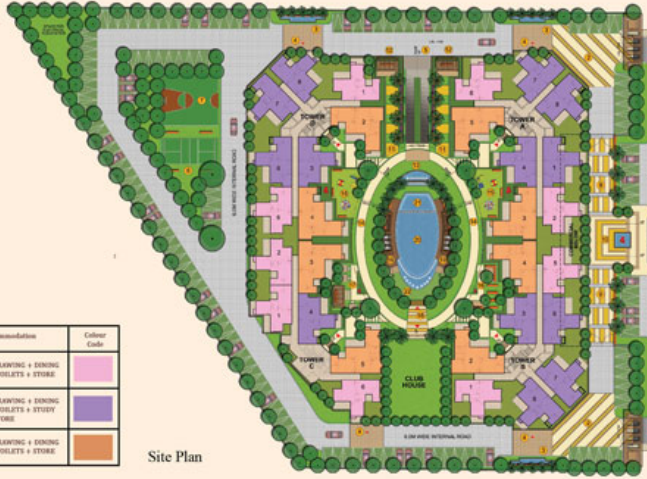
PARKING STATISTICS



APARTMENTS... AT A GLANCE

Apartment Category	Accommodation	Colour Code
Type - A	2 BEDROOMS + BREAKING + DINING + KITCHEN + 2 TOILETS + STORE	
Type - B	2 BEDROOMS + BREAKING + DINING + KITCHEN + 2 TOILETS + STUDY + STORE	
Type - C	3 BEDROOMS + BREAKING + DINING + KITCHEN + 3 TOILETS + STORE	

Site Plan



Legends

Residential area (ground level)

- 1 Entrance/ Exit gate complex
- 2 Entrance plaza
- 3 Water feature
- 4 Drop-off area
- 5 Ramp to podium level
- 6 Badminton court
- 7 Half basketball court

Commercial area

- 8 Drop-off area
- 9 Entrance plaza
- 10 Water feature

Residential area (podium level)

- 11 Plumeria court with fragrance garden
- 12 Garden pavilion with sitting (2 nos.)
- 13 Water cascade
- 14 Fire tender route (6 m wide) with jogging track (2 m wide)
- 15 Kids play area
- 16 Elders zone with sitting
- 17 Yoga/ Meditation garden with pavilion & platforms
- 18 Swimming pool area entrance through portals
- 19 Pool deck with pergola covering for loungers
- 20 Main swimming pool
- 21 Kids pool



Ensure happy relationships

Live surrounded by all the conveniences you desire for a hassle-free lifestyle. From family friendly ambience to secure fenced atmosphere, hassle-free parking to private sit-outs, this home is fully loaded with exceptional amenities to enhance your living experience.

- 24x7 secure community
- Spacious parking
- Uninterrupted power back-up
- Round-the-clock water supply
- Fire fighting arrangement

Floor Plans

2 Bedrooms + 2 Toilets + Store
Area - 995 Sq. Ft.



ENTRY



2 Bedrooms + 2 Toilets + Store + Study
Area - 1165 Sq. Ft.



Floor Plans

3 Bedrooms + 3 Toilets + Store
Area - 1425 Sq. Ft.





Specifications

LIVING / DINING ROOM

Floors: Vitrified tiles (size 16x16) / Neo-Aston/Ostent or equivalent

External Door & Windows: Powder coated aluminium glazing as per standard.

Fixture & Fitting: Modular switches, Cigital/Aurora/S&K or equivalent

Walls: OGD paint / Berger/Asian or equivalent

Internal Doors: Hard wood frame with skin moulded door shutter

Ceiling: Designer POP

MASTER BEDROOM

Floors: Wooden Laminate

External door & windows: Powder coated aluminium glazing

Fixture & Fitting: Modular switches, Cigital/Aurora/S&K or equivalent

Walls: OGD paint / Berger/Asian or equivalent

Internal Doors: Hard wood frame with skin moulded door shutter

Ceiling: POP

BEDROOM

Floors: Vitrified tiles (size 16x16) / Neo-Aston/Ostent or equivalent

External door & windows: Powder coated aluminium glazing as per standard.

Fixture & Fitting: Modular switches, Cigital/Aurora/S&K or equivalent

Walls: OGD paint / Berger/Asian or equivalent

Internal Doors: Hard wood frame with skin moulded door shutter

Ceiling: POP

TOILET / MASTER BEDROOM

Floors: Anti-slip Vitrified Ceramic tiles (size 16x16) / Neo-Aston/Ostent or equivalent

External door & Windows: Powder coated aluminium glazing

Fixture & Fitting: ISI Firing Granite Counter & Stained Churnam

Fixture & Fitting for grey water supply

CHENAWARE / BUNDAK/CLERA or equivalent

Walls: Designer Ceramic tiles up to 7'-2" / Neo-Aston/Ostent or equivalent

Internal Doors: Hard wood frame with skin Bush door shutter

TOILET / OTHER BEDROOM

Floors: Anti-slip Vitrified Ceramic tiles (size 16x16) / Neo-Aston/Ostent or equivalent

External door & windows: Powder coated aluminium glazing

Fixture & Fitting: ISI Firing granite counter & stained churnam

Fixture & Fitting for grey water supply

CHENAWARE: Hindware/Cera or equivalent

CP Fittings: Loretto/Meyer or equivalent

Walls: Designer ceramic tiles up to 7'-0" / Ostent/Asian

Internal Doors: Hard wood frame with skin Bush door shutter

KITCHEN

Floors: Anti-slip Vitrified Ceramic tiles (size 16x16) / Ostent/Asian/Equivalent imported

External door & Windows: Powder coated aluminium glazing

Fixture & Fitting: Sinks, Modular kitchen, Counter in granite stone,

Fixture & Fitting for grey water supply

CP Fittings: Loretto/Meyer or equivalent

Walls: Designer ceramic tiles up to 7'-0" / Ostent/Asian/Equivalent imported

Internal Doors: Hard wood frame with skin Bush door shutter

Utility: Single sink: Stainless steel (ISI Standard)

DRESSING ROOM

Floors: Wooden Laminated

Fixture & Fitting: Modular switches, Aurora/Cigital/S&K or equivalent

Walls: OGD Paint / Berger/Asian or equivalent

Ceiling: POP

BALCONIES

Floors: Ceramic tiles / Neo-Aston or equivalent imported

Walls: Permanent Finish / Textured plaster

Internal: Hard wood frame with Bush door shutter

ISI Standard or equivalent

LIFT LOBBIES CORRIDOR

Floors: Combination of different colours of Marble Stone as per owner.

Walls: Textured Paint above

MAIN ENTRANCE LOBBY

Floors: Combination of different colours of Marble Granite/Glass

Walls: Textured paint

Internal Doors: Marbled Hard wood frame with Bush door shutter

EXTERIOR FINISH

Floors: Combination of texture & permanent finish

Decorative: Visual representation shown in this brochure are purely conceptual. Building plan, specifications, layout along etc. are tentative and subject to revision and modification by the company at the complete authorities retaining plan.



newtech

constructing the future

Building fortune. Delivering smiles

A leading real estate company in India, Newtech is engaged in all key segments like residential, commercial, retail and hospitality. The company's operations encompass various aspects such as land identification and acquisition, project planning, designing, marketing and execution.

Vision

To continue our efforts for expansion and growth through true customer delight, utilizing the latest technology for successful business and happier lifestyles.

Mission

To establish everlasting relationships with our customers by delivering unparalleled services at fair and market competitive prices.

Completed projects



88C Professional's Park
1/1, Tatyasaheb Road, Indapuram, NCR



88B 1A, Durgam Road
NCR



88B 1B, Durgam Road
NCR

Ongoing projects



88B 1A, Durgam Road
NCR



88B 1B, Durgam Road
NCR



88B 1C, Durgam Road
NCR



88B 1D, Durgam Road
NCR